



OCTOBER 2022

Sunset Elementary School

Mrs. Ana Alvarez-Armon
Principal



Values Matter: RESPONSIBILITY

Sunday	Monday	Tuesday	Wednesday	Thursday	Friday	Saturday
					United Way Campaign runs from October 3 rd - 31 st Please donate to the Student United Way Campaign! See the United Way calendar for more details.	
2	3	4	5	6	7	8
			Teacher Planning Day NO SCHOOL 		Hispanic Heritage Dance Workshop Grade 5 IS Classes Last Day: Sunset PTA Fundraiser Charleston Wrap	GIPA Oktoberfest 12:00 – 7:00 p.m. German American Social Club 11919 SW 56 th ST
9	10	11	12	13	14	15
	VPK Payment Due World Mental Health Day 			Fall Book Fair Begins Scholastic Book Fair 8:30 a.m. - 3:30 p.m. Online Payments ONLY 	Scholastic Book Fair 8:30 a.m. - 3:30 p.m. Online Payments ONLY	Last Day of Hispanic Heritage Month
16	17	18	19	20	21	22
	Scholastic Book Fair 8:30 a.m. - 3:30 p.m. Online Payments ONLY Hispanic Heritage Student Presentations Spanish Magnet Classes	Scholastic Book Fair 8:30 a.m. - 3:30 p.m. Online Payments ONLY Hispanic Heritage Student Presentations Spanish Magnet Classes	Scholastic Book Fair 8:30 a.m. - 2:30 p.m. Online Payments ONLY Hispanic Heritage Student Presentations Spanish Magnet Classes	Scholastic Book Fair 8:30 a.m. - 3:30 p.m. Online Payments ONLY Hispanic Heritage Student Presentations Spanish Magnet Classes	Last Day of Fall Book Fair (Closing @12:00 p.m.) End of 1st Grading Period Hispanic Heritage Student Presentations Spanish Magnet Classes	
23	24	25	26	27	28	29
Red Ribbon Week Begins 	Beginning of 2 nd Grading Period November's B/A Care Payment through the 31st VPK Payment Due 	French Book Club Grades 4-5 Media Center @ 7:45 a.m. 	Book Club Grades 3-5 Media Center @ 7:45 a.m. Safety Patrol Quarterly Mtg. Media Center @ 2:00 p.m.			
30	31					
	Happy Halloween! Dress up as your favorite storybook character (NO costume masks or weapons) Last Day for November's Before/After Care Payments					



Come SOAR with Us!



Miami-Dade County Public Schools

giving our students the world

Superintendent of Schools
Dr. Jose L. Dotres

Miami-Dade County School Board
Perla Tabares Hantman, Chair
Dr. Steve Gallon III, Vice Chair
Lucia Baez-Geller
Dr. Dorothy Bendross-Mindingall
Christi Fraga
Dr. Lubby Navarro
Dr. Marta Pérez
Mari Tere Rojas
Luisa Santos

Dear Parent/Guardian:

Each year, children in specified grades are measured for height and weight to monitor their physical growth and development. For the school year 2022-2023, this is being taken a step further in the Miami-Dade County Public Schools by calculating your child's Body Mass Index (BMI). This calculation tells us if a child is in the normal range for weight, or is outside the norm and has increased potential to develop certain chronic health conditions during the childhood or adulthood. BMI is the recommended screening method for children and adolescents. It is based upon a child's age and gender, calculated using a child's height and weight, and compared to standardized growth charts. BMI screening is an additional school health service to assist in appraising, protecting, and promoting the health of your child. It is intended to encourage good nutritional habits and healthy physical activity.

The school health staff will conduct this routine screening. If you do not want your child to participate please notify the school in writing.

If your child participates in this initiative, you will receive a copy of the BMI screening results, and explanation of the results. In addition, the 2022-2023 school year will include information and activities that focus on healthy lifestyles and wellness.

Sincerely,

Mrs. Alvarez-Armon

Principal



Miami-Dade County Public Schools

giving our students the world

Superintendent of Schools
Dr. Jose L. Dotres

Miami-Dade County School Board
Perla Tabares Hantman, Chair
Dr. Steve Gallon III, Vice Chair
Lucia Baez-Geller
Dr. Dorothy Bendross-Mindingall
Christi Fraga
Dr. Lubby Navarro
Dr. Marta Pérez
Mari Tere Rojas
Luisa Santos

Estimados padres de familia o tutores:

Todos los años se toma el peso y se mide la estatura de los niños que cursan ciertos grados específicos para observar su desarrollo y crecimiento físicos. Para el curso escolar de 2022-2023, las escuelas públicas del condado Miami-Dade tomarán una medida adicional al calcular el índice de masa corporal (Body Mass Index, o BMI, por sus siglas en inglés) de su hijo o hija. Dicho cálculo determina si su hijo o hija está en el nivel normal de peso o si está fuera de lo normal y tiene un mayor potencial de contraer ciertas enfermedades crónicas durante la niñez o en la edad adulta. El BMI es el método de examen masivo que se recomienda para los niños y los adolescentes. El mismo se basa en la edad y el sexo del niño o de la niña y se calcula por medio del peso y la estatura en comparación con tablas de crecimiento estandarizadas. El examen masivo del BMI es un servicio de salud escolar adicional que ayuda a evaluar, proteger y promover la salud de los estudiantes. Tiene el objeto de estimular los buenos hábitos de nutrición y las actividades físicas saludables.

El personal de salud de la escuela realizará dicho examen médico de rutina. Si no desean que su hijo o hija participe, por favor, notifíqueno a la escuela por escrito.

Si su hijo o hija participa en esta iniciativa, recibirán una copia de los resultados del examen masivo del BMI y una explicación de los mismos. Además el curso escolar de 2022-2023 incluirá información y actividades centradas en estilos de vida saludable.

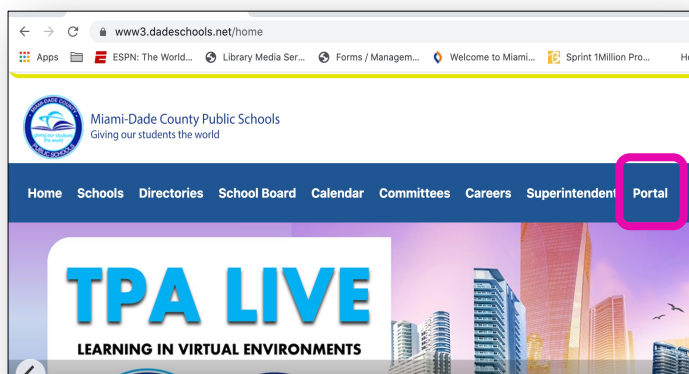
Atentamente,

Sra. Alvarez-Armon

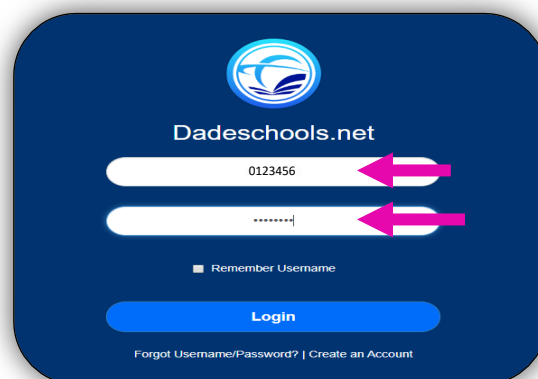


NAVIGATING TO SCHOOLGY THROUGH THE PORTAL

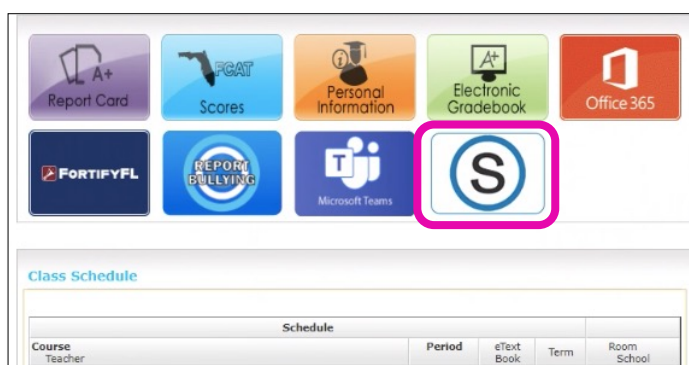
1 Follow these steps to open Schoology from the Portal. Go to www.dadeschools.net and click on "Portal".



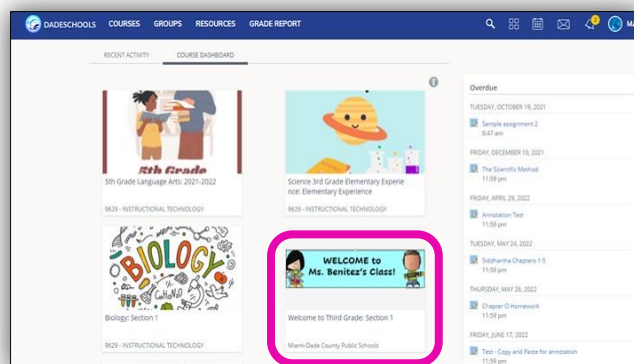
2 To access your portal, enter your Student ID Number and Password. Click on the Blue "Login" Button.



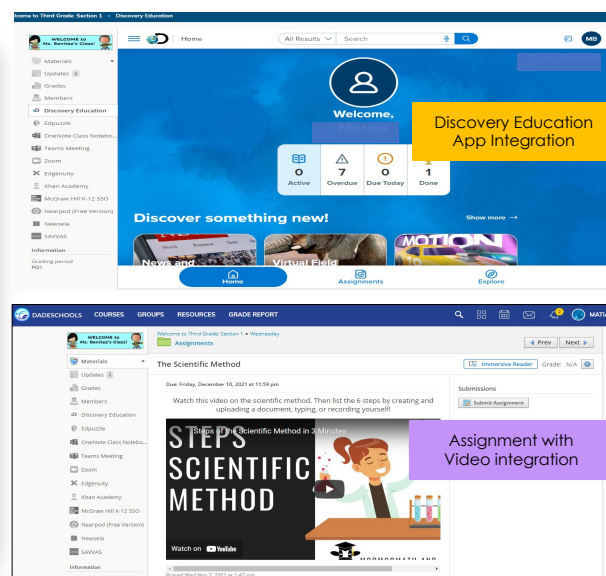
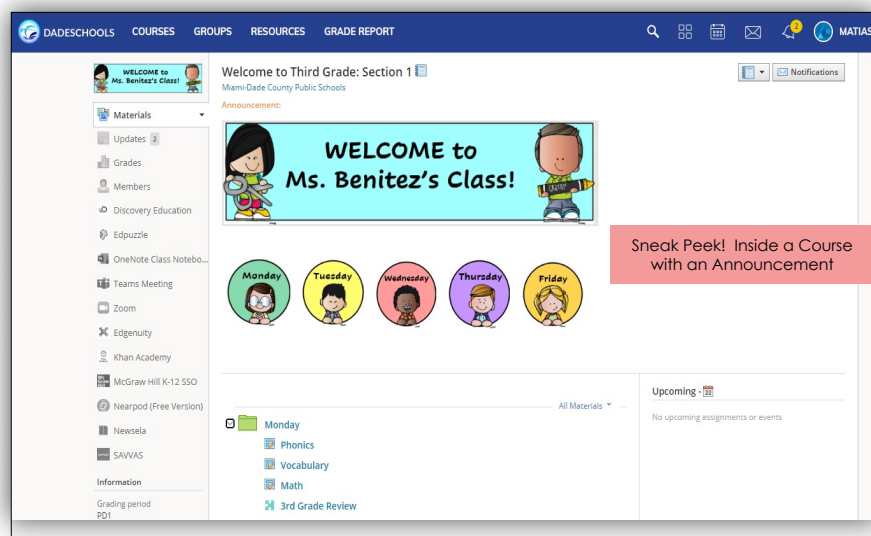
3 From your Portal Landing Page (HOME), click on the "S" tile to enter the Schoology platform.



4 Welcome to SCHOOLGY! Your "Course Dashboard" displays the classes you are registered for. Click on a tile to enter a class.



5 YOU GOT THIS! Once inside your course, You will find the activities and resources your teacher prepared for you (i.e., announcements, assignments, assessments, class news, discussions, textbooks, apps and more).





Sunset Elementary School

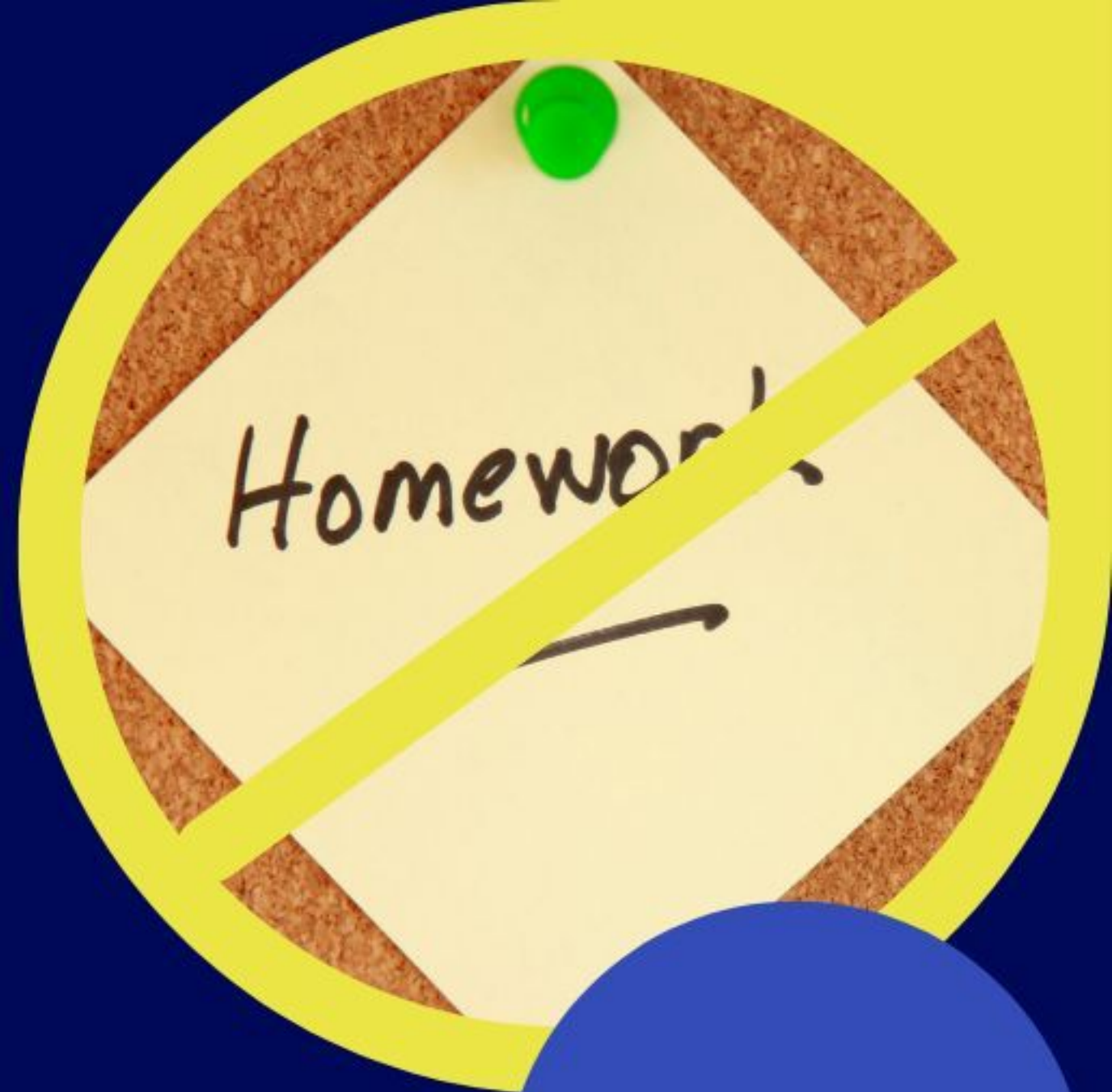
PTA[®]

everychild.one voice.[®]

MEMBERSHIP DRIVE

BECOME A MEMBER BY OCTOBER
15TH AND YOUR CHILD WILL
RECEIVE A **HOMEWORK PASS** VALID
FOR ONE DAY IN THE SUBJECT OF
THEIR CHOOSING.

[HTTPS://SUNSETES.MEMBERHUB.COM/STORE](https://sunsetes.memberhub.com/store)



LAST DAY
OCT 15TH



SUSHI FOR YOUR SCHOOL

pubbelly
SUSHI

For Credit: Must mention
Sunset to your server or
write "sunset" on the back
of your receipt and drop it
in the box at the host stand!

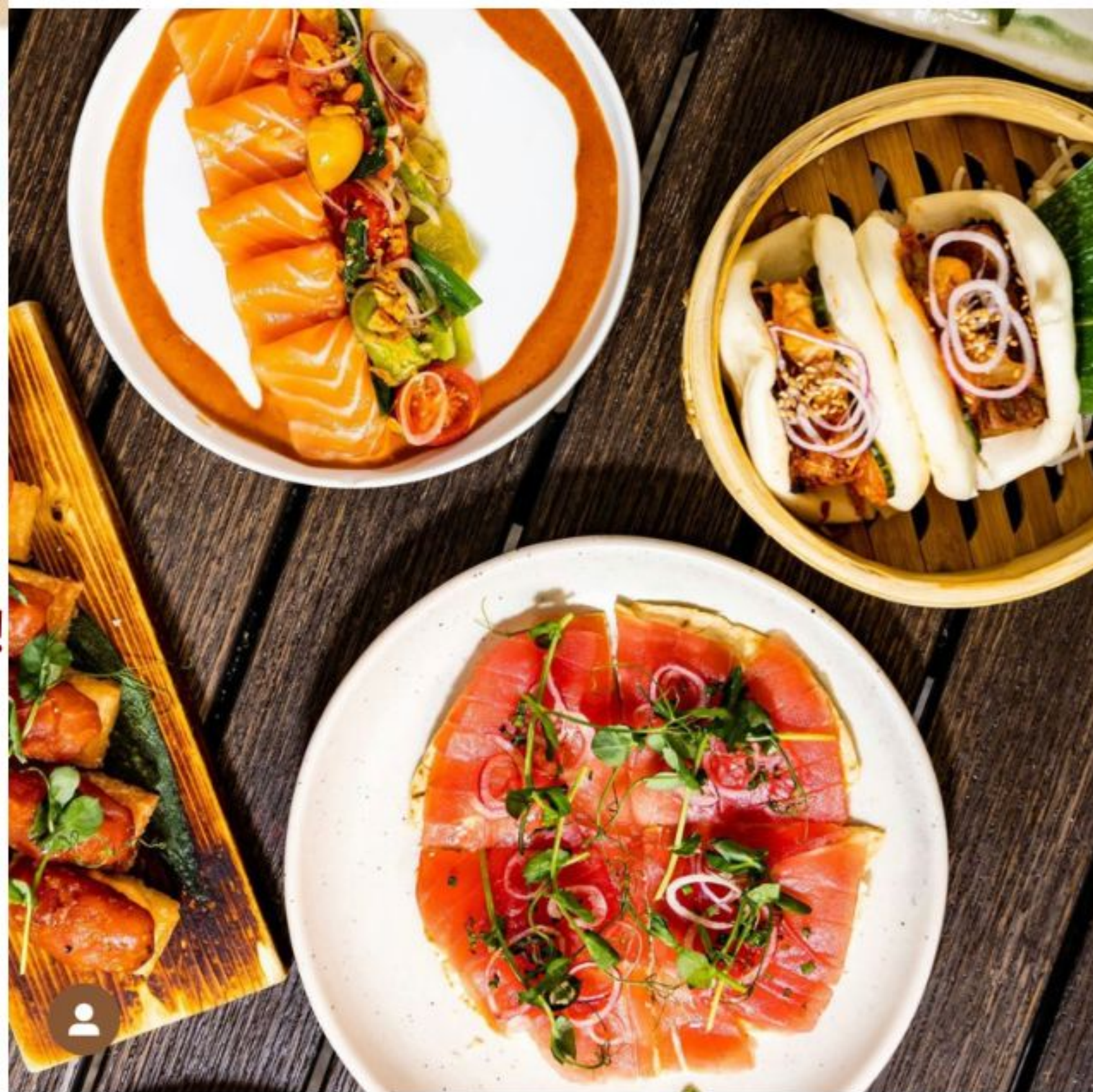
The school that raises the
most money gets an extra
\$1000 contribution from
Pubbelly!

Pubbelly Sushi Dadeland

October 1-31

Dine-in & Take-out

10% of sales will go back to Sunset!



@pubbellyglobal



Sunset Elementary School

PTA

everychild.onevoice.

Sunset Elementary School

PTA

everychild.one voice.

Charleston Wrap
BETTER PRODUCTS. BETTER FUNDRAISING.

happy holidays
from the Catos

Don't miss the deadline!
WE NEED YOUR HELP!

www.registercw.com





2022-2023
**CALL FOR
ENTRIES!**
SHOW YOUR
VOICE!

SHOW YOUR VOICE

Explore the
Arts and Express
Yourself!

Learn more
and get involved!
[PTA.org/Reflections](https://pta.org/reflections)



DANCE
CHOREOGRAPHY



FILM
PRODUCTION



LITERATURE



MUSIC
COMPOSITION



PHOTOGRAPHY



VISUAL ARTS

DEADLINE FOR ENTRIES:

October 28th

FOR DETAILS:

programs@sunsetpta.org



Student Educational Enrichment Drive
Supporting Sunset Elementary School



Who we are?

Parent organization that raises funds for technology needs for the entire school including all language programs.

Highlights

- Funded laptop charging stations for all 3rd through 5th Grade classrooms and 9 classroom sound systems
- Purchased both LanguageNutz and BrainPop yearly subscriptions for school-wide use
- Procured 30 new classroom computers and provided upgrades to classroom and media center computers
- Donated more than \$100,000 in Classroom Educational Enrichment Grants since SEED's inception



How can you help?

Follow Us on Instagram!



SEED Website - Donate & Get Involved



- Purchase a **Friday T-shirt** for your child
- Support our **BRICK CAMPAIGN** and leave a lasting mark at Sunset Elementary
- For questions and more details email us - info@sunsetseed.net





Student Educational Enrichment Drive
Supporting Sunset Elementary School



COMMEMORATIVE BRICK SALE

LEAVE YOUR MARK AT
SUNSET ELEMENTARY!

**PRE-SALE PRICES
END DECEMBER 9!**

<i>Brick Size</i>	<i>Sale Price</i>	<i>Savings</i>
SMALL (4X8)	\$95	\$25
LARGE (8X8)	\$360	\$160

Regular sale prices will go
into effect on December 10.
Brick sale ends April 14, 2023

HELP FUND SUNSET'S
TECHNOLOGY NEEDS!

Scan and Order here!



WWW.SUNSETSEED.NET/SHOP



FIPA is looking for sponsors for his annual charity gala event at the very chic



If you are interested please send your sponsorship form and logo @ vp@fipamiami.org by November 1st, 22.



BRONZE

\$500

- Logo on our website for 1 year
- Logo in the program of the event
- 1 ticket to the event



SILVER

\$1,000

- Logo on our website for 1 year
- Logo in the event program
- 2 tickets to the event
- Insert one of your products in our goodie bags



GOLD

\$2,500

- Logo on our website for 1 year
- Logo in the event program
- 4 tickets to the event
- Insert one of your products in our goodie bags

Oct
5TH

GIPA

MEMBERSHIP PROMO!

LAST DAY FOR PROMO
IS OCT 5TH!



JOIN
TODAY!

ALL CLASSES THAT GET 100% MEMBERSHIP
PARTICIPATION BEFORE OKTOBERFEST WILL
GET A FREE SNOW CONE AT THE EVENT!

Vouchers will be delivered by
German teachers in class

www.gipa.org



**PRE SALE PACK
11 TICKETS FOR \$10**

BUY as many packs as you would like. Pick up the tickets at WILL CALL. Additional tickets can be purchased at the day of the event.



11919 SW 56th St, Miami 33175
German American Social Club


Let's Celebrate !


Oktoberfest


Saturday, October 8  12 - 7PM


FREE ADMISSION & PARKING


 Traditional Bavarian food & a variety of beverages

 Cakes, cookies & coffee

 Rides & games for the Kids

 DJ, Accordion musician & student performances

 Silent Auction

 Commemorative GIPA mugs

 Vendors & more!

GIPA

WE NEED YOU!

OKTOBERFEST is possible because of a dedicated team of volunteers. Sign up online to help, make the day extra fun and make some new friends in the process!

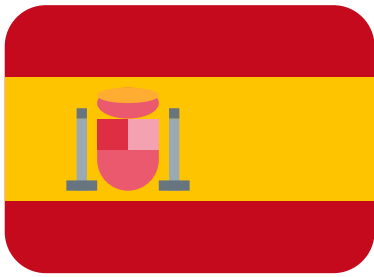
Buy tickets now thru October 7 and **SAVE**

For details, tickets & volunteer opportunities visit:

www.gipa.org/oktoberfest

*Danke
Schön*

ALL PROCEEDS BENEFIT THE GERMAN PARENT INTERNATIONAL ASSOCIATION WHOSE MISSION IS TO SUPPORT THE OUTSTANDING GERMAN LANGUAGE MAGNET PROGRAMS OF MDCPS



Hispanic Heritage Luncheon for All Faculty, Staff, Custodians, and Security Personnel

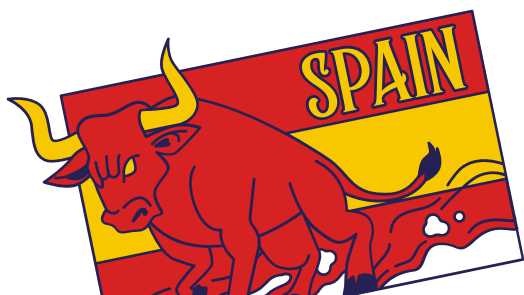
We continue with tradition and SIPA Sunset will host the
2022 Paella for faculty and staff on October 26.

We kindly ask parents from all the programs to consider
donating any items from the sign-up list.

<https://signup.com/go/SKgoeji>

Thank you for your support!

**Questions or volunteer opportunities? Email us at
sipasunset@gmail.com.**





**Presenta
Taller de Danza**



*Salsa y
Merengue*

**September 30, 2022
4th Grade**

**October 7, 2022
5th Grade**

**Sunset Elementary School
Spanish Program**



Tarde en el parque October

Friday, October 7, 2022

4:15 P.M.

Dante Fascell Park

8600 S.W. 57 Avenue

South Miami



Meet your classmates. Play sports at the park.

Buy pizza with cash or credit card (2 slices for \$3), or bring your own snack.

Kindly bring your own water bottle or beverage.



First Winners!

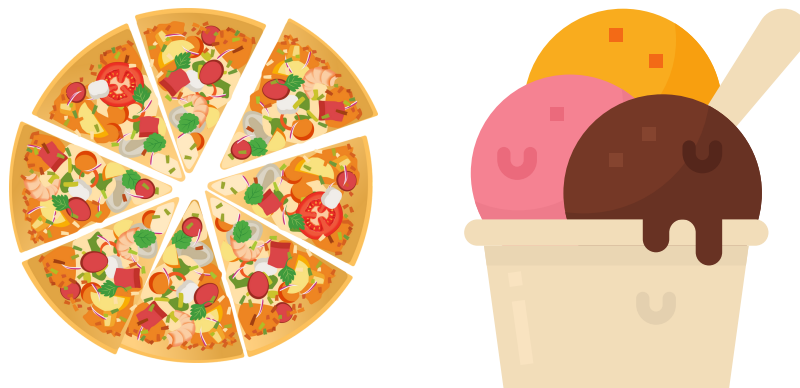
Sra. Ávila's Class!

¡Muchas gracias! We appreciate your support!

Thank you to the parents of Sra. Ávila's third grade class.
100% membership achieved.

Their class will enjoy a pizza and helados fiesta al fresco!!!

**Your class could be the next one!
Not sure if you are a member?
Email us at sipasunset@gmail.com**



PLEASE BECOME A SIPA MEMBER. Your membership supports educational and cultural activities for our children in the Spanish program.

www.sipamiami.org